



GOLD
STANDARD
PHANTOMS

SPECTRE

Spectroscopy Reference

Setting the
Standard!
for Magnetic Resonance
Spectroscopy

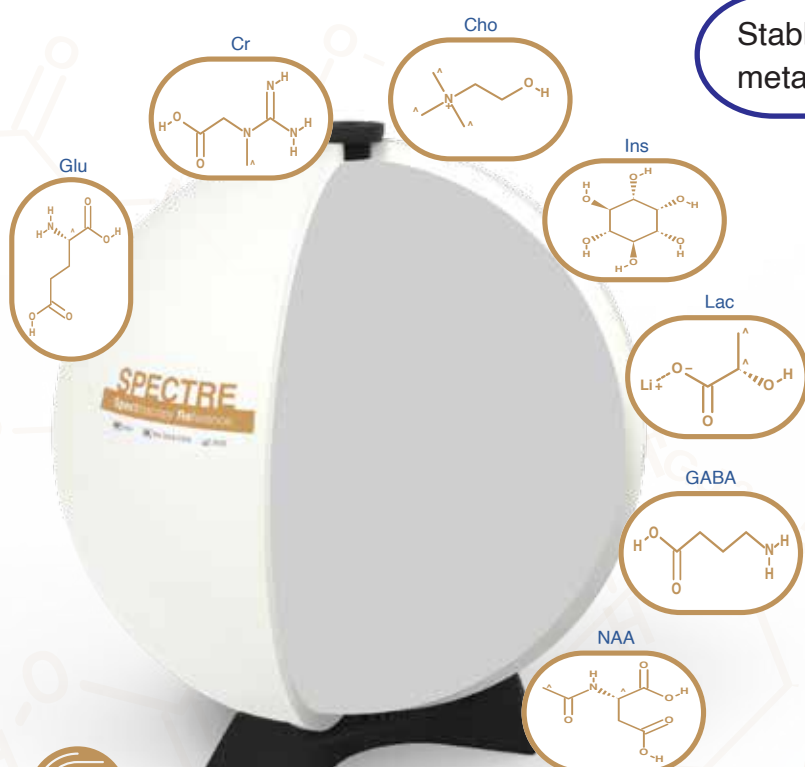
Available in 2 sizes
18cm & 11cm

The SPECTRE (Spectroscopy Reference) phantom is designed for Quality Assurance measurements of Magnetic Resonance Spectroscopy (MRS). It contains a set of metabolites found within the brain at physiological concentrations and pH, all housed within a HDPE spherical shell.

Up to 70 SPECTRE phantoms can be made from the same batch, providing identical phantoms for use in multi-centre studies.

In addition to the metabolites typically used in MRS QA, our SPECTRE phantoms also include GABA (gamma-Aminobutyric acid) at the physiological concentration of 2mM, to allow performance testing of both standard (e.g. PRESS, LASER) and J-edited (e.g. MEGA-PRESS) MRS acquisitions.

Stable solution of the seven most common brain metabolites at physiological pH and concentrations.



Metabolite	Concentration
N-Acetyl-aspartic acid (NAA)	12.5 mM
Creatine (Cr)	10.0 mM
Choline Chloride (Cho)	3.0 mM
Myo-inositol (Ins)	7.5mM
Glutamate (Glu)	12.5mM
Lactate (Lac)	5.0 mM
Gamma-Aminobutyric acid (GABA)	2.0 mM



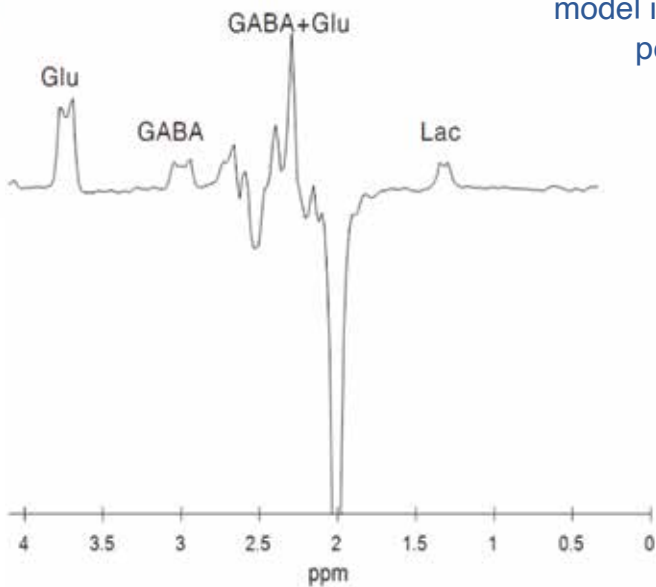


SPECTRE

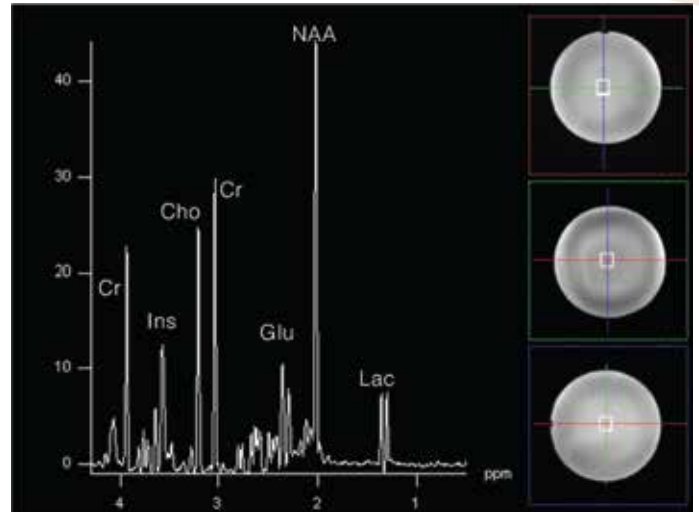
Assess the performance and reproducibility of both standard and edited Magnetic Resonance Spectroscopy sequences.

SPECTRE Pico

Approximately a third of the size of our full size model. This model ideal for neonatal and pediatric studies.



Edited MEGA LASER difference spectra at 3T, TE=68ms



Example spectra acquired at 3T, TE =30ms

Diameter

SPECTRE	180mm OD
SPECTRE Pico	110mm OD

Contents

Water-based solution containing metabolites
Potassium Phosphate pH Buffer (50mM)
Gd-DTPA
CMIT:MIT based preservative

pH (@20C)	7.4
-----------	-----

Materials

HDPE (spherical shell)
Nylon (cap)
Nitrile (cap gasket)

Includes

Liquid crystal thermometer
Protective foam lined box
Stand

Visit us for more



EU GPSR Representative

AR Experts B.V.



Amerlandseweg 7
3621 ZC Breukelen
The Netherlands
info@ar-experts.eu

Serial Number:

SN-



**GOLD
STANDARD
PHANTOMS**

www.goldstandardphantoms.com

1A Parkway Rise, Sheffield, South Yorkshire, S9 4WQ, United Kingdom